

Wood Packaging Material Rapid Visual Checklist



Use the questions below to check wood packaging material (WPM) compliance before shipment to the United States.

Please check the box if shipment is compliant

1

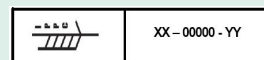
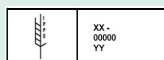
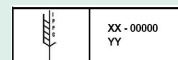
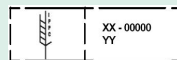
IPPC ISPM-15 MARKING



Are all WPM stamped with International Plant Protection Convention ISPM-15 marks that are easily visible?

2

STAMP COMPLIANCE



Are all stamps in a valid ISPM-15 format?

3

MATERIAL CONSISTENCY



Is all the same wood used throughout? Or, are each of the different parts marked and compliant?

4

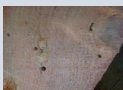
DEBARKED



Is all bark removed from the WPM?

5

NO LIVE PESTS



Have you checked for holes, tunnels, channels, or loose or compacted sawdust in or on the WPM? *This could indicate the presence of live pests.*